

High Flow Pleated Filter Cartridge

大流量折叠滤芯

产品特点

Characteristic



01

单侧开口，专用手环设计，安装更方便，密封性更
Single open end, special design of handle for easy assembly, and better sealing performance.

03

内置中心杆，外附支撑骨架，全聚丙烯（PP）结构，不会产生纤维脱落等隐患。

Cartridge central rod and external support frame are made of polypropylene, free of fibre shedding risk.

05

优化流体的水利条件设计，超强骨架结构，褶皱结构稳定，流道均匀，通量大，超强内外支撑保护，抗变形能力强，更换压差是普通滤芯的两倍。

Optimized hydrodynamic design, stable pleated structure, uniform flow channel and high flux. Super internal and external support with strong anti deformation ability, since the replacement pressure difference is twice that of ordinary filter cartridges.

02

热熔焊接，无化学粘合剂，对水体无污染，耐腐蚀性
Hot-melt welding technology, no chemical adhesive, pollution-free and strong corrosion resistance.

04

特殊的打褶工艺，增大滤芯过滤面积，延长使用寿命
Pleated design increases cartridge filtration surface and service life.

06

接口型式齐全，可以提供专门用于凝结水精处理除铁过滤的高温、高压型产品。

Wide range of connections, suitable for high temperature and high pressure applications, including condensate filtration.



产品简介

Product Introduction

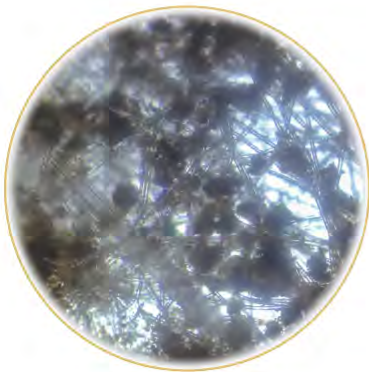
BOC系列大流量滤芯采用复合滤材组合，能有效去除水中的固体杂质和颗粒。其独特的褶形在保证流道稳定的同时也提供了更大的过滤面积。滤材的支撑层采用塑料网格，大幅度降低了流阻，增强了滤材的强度，增加了滤芯的过滤效果及使用寿命。滤芯全部采用PP材质热熔焊接而成，结构稳定，可以广泛应用于不同的领域。

BOC series high flow cartridge consists of composite materials, it can effectively remove the impurities and particles. The unique pleat-shaped design ensures greater filtration surface and stability of the flow-path. A plastic mesh is used in the supporting layer, which greatly strengthens the filter material, reduces the flow resistance, increases the cartridge filtering performance and service life. High flow cartridge is made of hot-melt welding polypropylene, a stable material used in a variety of applications.

BOC 系列大流量折叠滤芯技术优势

Advantages

- BOC使用的滤材是“长效热熔工艺”，属于长纤维深层过滤，过滤效率高，适应范围广，纳污能力强，压差增长缓慢，过滤性能好；而大多数品牌滤芯的滤材是熔喷工艺，滤丝粗细不均匀，属于平面浅层过滤，纳污能力不高。
- BOC cartridge adopts “hot-melt process”, a kind of long fiber with wide applications, which has a very good performance in filtration efficiency, pollution capacity and DP growth rate. While most of the cartridges in the market are melt-blown technology with fibers of uneven thickness, flat surface filtration and low pollution tolerance.
- 滤材的相容性 (COC) 更高，滤材溶出物少,符合FDA 177.1520标准。
- Higher compatibility of construct(COC) and less dissolved of the filter material, meet the standard FDA 177.1520.



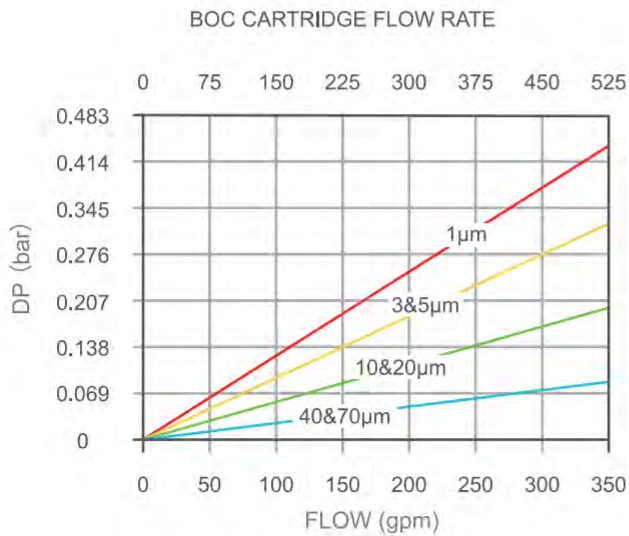
BOC滤芯过滤效率

Filtration Efficiency of BOC Cartridge

Particle Size Micron Rating	β Ratio		
	β 1000	β 100	β 10
1μm	1μm	0.6μm	0.2μm
3μm	3μm	2μm	1.5μm
5μm	5μm	3μm	2μm
10μm	10μm	9μm	7μm
20μm	22μm	19μm	15μm
40μm	39μm	27μm	16μm
70μm	70μm	45μm	20μm

$$\beta \text{ Ratio} = \frac{\text{上游粒子数量} \\ \text{Number Of Upstream Particles}}{\text{下游粒子数量} \\ \text{Number Of Downstream Particles}}$$

注释/Note:
 β 1000: 去除率/ Particle Removal Rate 99.9%
 β 100: 去除率/ Particle Removal Rate 99%
 β 10: 去除率/ Particle Removal Rate 90%



- 横坐标上部表示60"的滤芯流量。
- The upper part of the abscissa indicates the flow rate of the 60" filter element.
- 横坐标下部表示40"的滤芯流量。
- The lower part of the abscissa indicates the flow rate of the 40" filter element.
- 纵坐标表示运行压差DP。
- The ordinate indicates the operating differential pressure (DP).



BOC 选型指南

Guide Of Model Selection

滤芯系列 Cartridge Serie	接口形式 Connection	直径 Diameter	滤芯长度 Cartridge Length	过滤精度 Filtration Degree (μm)
CFE / CFD	BOW型 / BOW Type	60-6" (152mm)	20" (508mm)	1、3、5、10、20、40、70、100
	PAL型 / PAL Type			
	MV型 / MV Type			
	MH型 / MH Type			
	PKD型 / PKD Type			
	PKS型 / PKS Type			
	LV型 / LV Type			
W型 / W Type	60" (1524mm)			

应用领域

Application

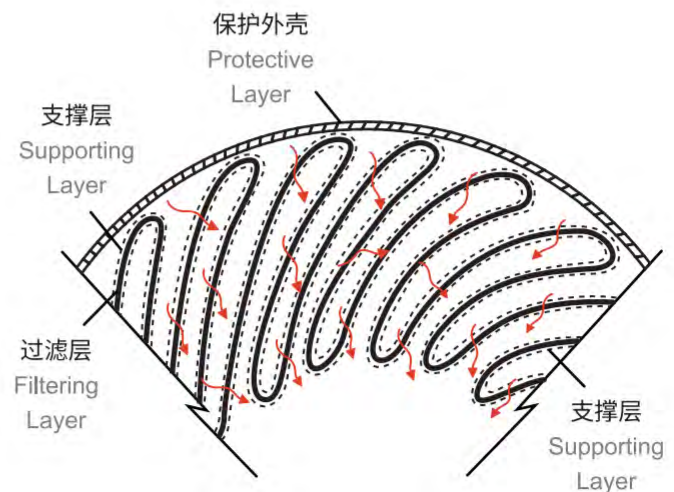
- 膜法水处理系统UF/RO/EDI保安过滤。
- UF/RO/EDI membrane protection.
- 电力、电子、化工、废水回用、市政用水、海水淡化、垃圾渗滤液及料液分离等领域。
- Power, electronic, chemical, waste water reuse, municipal, desalination of seawater, landfill leachate treatment and separation fields etc.
- 纺织印染、造纸行业的各种液体净化。
- Purification in textile printing, dyeing and papermaking industries.
- 食品饮料业：酒类、瓶装水、茶饮料、乳制品、食用油等食品添加剂制造的流程净化和无菌处理。
- Process purification and aseptic treatment of food additives such as alcohol, bottled water, beverage, dairy products, edible oil, etc.
- 乳胶漆、油漆原料和溶剂过滤、印刷油墨、打印油墨及添加剂。
- Filtration of latex paint, raw paint material & solvent, printing inks, printing inks and additives.



BOC CFE系列大流量折叠滤芯

BOC CFE Series High Flow Pleated Filter Cartridge

- BOWNT BOC CFE系列大流量滤芯采用月牙形波浪褶皱，褶皱更圆润，结构更稳定，流道更均匀。
- BOWNT BOC CFE series high flow cartridge adopts crescent wave pleats, uniform flow channels and more stable structure with rounded pleats.
- 超大的过滤面积，纳污能力更强。
- Large filtration surface and good pollution capacity.
- 过滤精度高，1-100 μm 过滤精度。
- Cartridge micron rating from 1 μm to 100 μm .
- 单端开口，内外支撑，耐压差能力强。
- Single open end, internal and external support frame and strong differential pressure resistance.
- 滤芯通量大，所需数量少，更换方便。
- Easy replacement of cartridges, high flux could reduce cartridges consumption.
- 按照人机工程学设计的末端手柄确保安装和拆卸快速简便并无需使用特殊工具。
- Ergonomically designed handle allows easy and quick installation or replacement of filter cartridges, free of special tools.
- 多层深层渐变式过滤，过滤层由粗到细，可以分层次拦截不同大小的颗粒，过滤效率高，适应范围广，压差增长缓慢，过滤性能好。
- Deep gradient filtration of multi layers from coarse to fine, which can stuck particles of different sizes at different layers. High efficiency, wide application, slow growth of differential pressure and good performance in filtration.



技术参数

Technical Data

滤芯性能/Cartridge Performance

过滤精度/Filtration Degree 1、3、5、10、20、40、70、100...

更换压差/Max. Differential Pressure 36.25psi(0.25Mpa)

最高操作温度/Max. Working Temperature 176°F(80°C)

过滤面积/Filtration Area

20" 38ft²(3.5m²)

40" 76ft²(7m²)

60" 114ft²(10.5m²)

最大过滤流量/Max. Flow

20" 110gpm(25m³/h)

40" 220gpm(50m³/h)

60" 308gpm(70m³/h)

滤芯材料/Cartridge Material

过滤层/Filtering Layer 聚丙烯 (PP)

内外支撑/Inner&Outer Support 聚丙烯 (PP)

端盖/End Cap 聚丙烯 (PP) / 聚丙烯+玻纤 (FRP)

O型圈材质/O-ring Material EPDM、丁晴橡胶 (NBR)、氟橡胶 (FPM)、硅胶 (SIL)



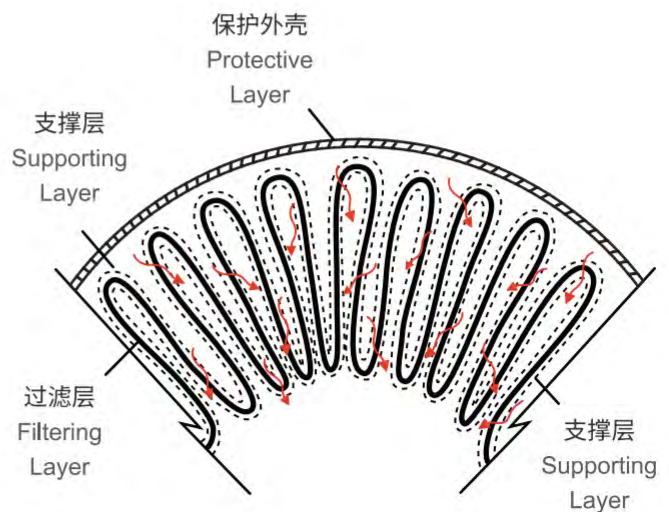
PURIFICATION IN ACTION



BOC CFD系列大流量折叠滤芯

BOC CFD Series High Flow Pleated Filter Cartridge

- BOWNT BOC CFD系列大流量滤芯采用放射星形打折。
- BOC CFD series high flow cartridge adopts radial star pleats.
- 过滤精度高, 1-100 μm 过滤精度。
- Cartridge micron rating from 1 μm to 100 μm .
- 单端开口, 内外支撑, 耐压差能力强。
- Single open end, internal and external support frame and strong differential pressure resistance.
- 滤芯通量大, 所需数量少, 更换方便。
- Easy replacement of cartridges, high flux could reduce cartridges consumption.
- 按照人机工程学设计的末端手柄确保安装和拆卸快速简便并无需使用特殊工具。
- Ergonomically designed handle allows easy and quick installation or replacement of filter cartridges, free of special tools.
- 多层深层渐变式过滤, 过滤层由粗到细, 可以分层次拦截不同大小的颗粒, 过滤效率高, 适应范围广, 压差增长缓慢, 过滤性能好。
- Deep gradient filtration of multi layers from coarse to fine, which can stuck particles of different sizes at different layers. High efficiency, wide application, slow growth of differential pressure and good performance in filtration.



技术参数

Technical Data

滤芯性能/Cartridge Performance

过滤精度/Filtration Degree 1、3、5、10、20、40、70、100...

更换压差/Max. Differential Pressure 29psi(0.2Mpa)

最高操作温度/Max. Working Temperature 158°F(70°C)

过滤面积/Filtration Area

20" 32ft²(3m²)

40" 64ft²(6m²)

60" 96ft²(9m²)

最大过滤流量/Max. Flow

20" 88gpm(20m³/h)

40" 176gpm(40m³/h)

60" 264gpm(60m³/h)

滤芯材料/Cartridge Material

过滤层/Filtering Layer 聚丙烯 (PP)

内外支撑/Inner&Outer Support 聚丙烯 (PP)

端盖/End Cap 聚丙烯 (PP) / 聚丙烯+玻纤 (FRP)

O型圈材质/O-ring Material EPDM、丁晴橡胶 (NBR)、氟橡胶 (FPM)、硅胶 (SIL)



PURIFICATION IN ACTION

